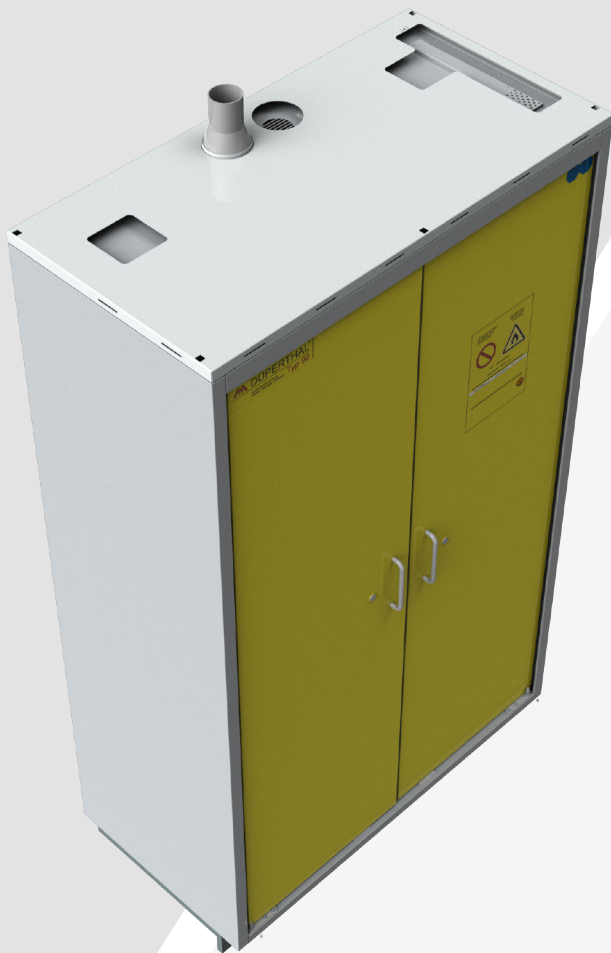




Extra load adapter  
For safety storage cabinets



**Zubehör**

Operating instructions

DÜPERTHAL Sicherheitstechnik GmbH & Co. KG  
Frankenstrasse 3  
D-63791 Karlstein  
Germany  
Telephone: +49 6188 9139-0  
Fax: +49 6188 9139-121  
Email: [info@dueperthal.com](mailto:info@dueperthal.com)  
Internet: [www.dueperthal.com](http://www.dueperthal.com)

© 03/2020 DÜPERTHAL, 71307, 2, en\_GB



## Table of contents

<b>1</b>	<b>General information</b> .....	<b>35</b>
1.1	Notes for reading.....	35
1.2	Labelling.....	35
1.3	Guarantee.....	35
<b>2</b>	<b>Safety</b> .....	<b>37</b>
2.1	Function of safety notices.....	37
2.2	Correct use.....	37
2.3	Misuse.....	37
2.4	Obligations of the operator.....	37
2.5	Demands on employees.....	38
2.6	Hazardous areas and their labelling.....	39
<b>3</b>	<b>Technical specifications</b> .....	<b>41</b>
3.1	CLASSIC/COMPACT.....	41
3.2	PREMIUM.....	42
<b>4</b>	<b>Structure and function</b> .....	<b>43</b>
4.1	Construction.....	43
4.2	Pipe penetration.....	43
4.3	Earthing options.....	44
<b>5</b>	<b>Transport</b> .....	<b>45</b>
5.1	Transport measures.....	45
5.2	Measures for in-house transport.....	45
<b>6</b>	<b>Extra load adapter installation</b> .....	<b>47</b>
<b>7</b>	<b>Commissioning</b> .....	<b>49</b>
7.1	Superstructure on the extra load adapter.....	49
7.2	Earth the safety storage cabinet via the extra load adapter.....	50
<b>8</b>	<b>Maintenance</b> .....	<b>51</b>
8.1	Inspect monthly.....	52
8.2	Inspect annually.....	52
<b>9</b>	<b>Disposal</b> .....	<b>53</b>


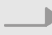




# 1 General information

## 1.1 Notes for reading

The following symbols designate specific types of information.

Tab. 1: Explanation of symbol

Symbol	Type of information
	Information for easier and more effective working
	Procedural step
	Result of a procedural step
	Link to another part of the document

## 1.2 Labelling

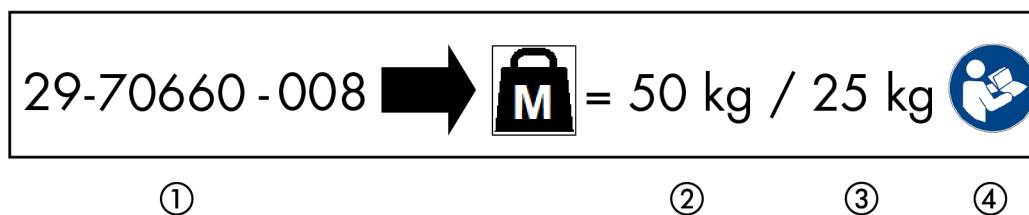


Fig. 1: Labelling (model size S / M)

- 1 Reference number
- 2 Maximum load-bearing capacity
- 3 Non-flammable maximum load bearing component
- 4 Note on compliance with the operating instructions  Chapter 2.6 'Hazardous areas and their labelling' on page 39

The labelling is attached to the front side of the extra load adapter.

## 1.3 Guarantee

Liability for defects in the delivered products is defined in the Terms and Conditions of Delivery. We accept no liability whatsoever for damage caused by failure to comply with the operating instructions and conditions of use.

Only flawless products with the properties pledged by DÜPERTHAL leave our factory. If the information in these operating instructions is followed, correct operation is guaranteed.



*The operating instructions for the safety storage cabinet must be observed.*



## 2 Safety



*For more information, follow the operating instructions for the safety storage cabinet.*

### 2.1 Function of safety notices

Safety notices warn against physical or material damage and provide information on how such damage can be avoided.

The following signal words identify the degree of danger and the extent of the risk.



**WARNING!**  
The signal word refers to a potential threat which can cause death or serious injury.



**NOTICE!**  
The signal word 'NOTE' indicates a situation that can lead to damage to the safety storage cabinet.

### 2.2 Correct use

The extra load adapter must be used for supporting loads on the safety storage cabinet.

The loads to be supported must not exceed the prescribed limits and must be secured to prevent the cabinet from slipping or falling over.

The load bearing capacity of the cabinet is reduced by the extra load.

It is not permitted to mount a superstructure that exceeds the external dimensions of the cabinet.

The nationally applicable regulations must also be observed.

Any other use shall be deemed incorrect.

### 2.3 Misuse

DÜPERTHAL accepts no liability for damage arising from misuse.

The following constitute misuse:

- Exceeding the permissible maximum load bearing capacity.
- Exceeding the permissible non-flammable maximum load bearing component.
- Conversion measures and modifications to the extra load adapter without the knowledge and consent of DÜPERTHAL and use beyond the intended limits.
- Any utilisation beyond the terms of correct use.

### 2.4 Obligations of the operator

The operator is obliged to comply with applicable legal regulations. This includes:

- Issuing operating instructions.
- Carrying out risk assessments.
- Creating explosion protection documents.
- Specifying activities by designated employees.



## 2.5 Demands on employees

### WARNING!

#### Employees who do not meet these requirements

This may result in death or serious injury.

- Designate employees who meet the requirements to carry out activities.

These operating instructions set out the following employee activities:

- Specialist technical employees
- DÜPERTHAL service technicians

Only people who have been trained by the operator in use of the safety storage cabinet and handling of the stored goods are approved as specialist technical employees.

#### **DÜPERTHAL service technicians**


DÜPERTHAL employees are specifically trained by DÜPERTHAL to carry out their activities.

## 2.6 Hazardous areas and their labelling

The following must be attached to the front of the extra load adapter and must be clearly visible:

- Reference number
- Load bearing component details
- Reference to the operating instructions

*Tab. 2: Mandatory action signs*

Symbol	Meaning	Standard
	M002: Read operator's manual	DIN EN ISO 7010:2012



### 3 Technical specifications

#### 3.1 CLASSIC/COMPACT

The CLASSIC line extra load adapter has cut-outs for the exhaust air and air supply openings, the thermocouples and for any pipe penetrations.

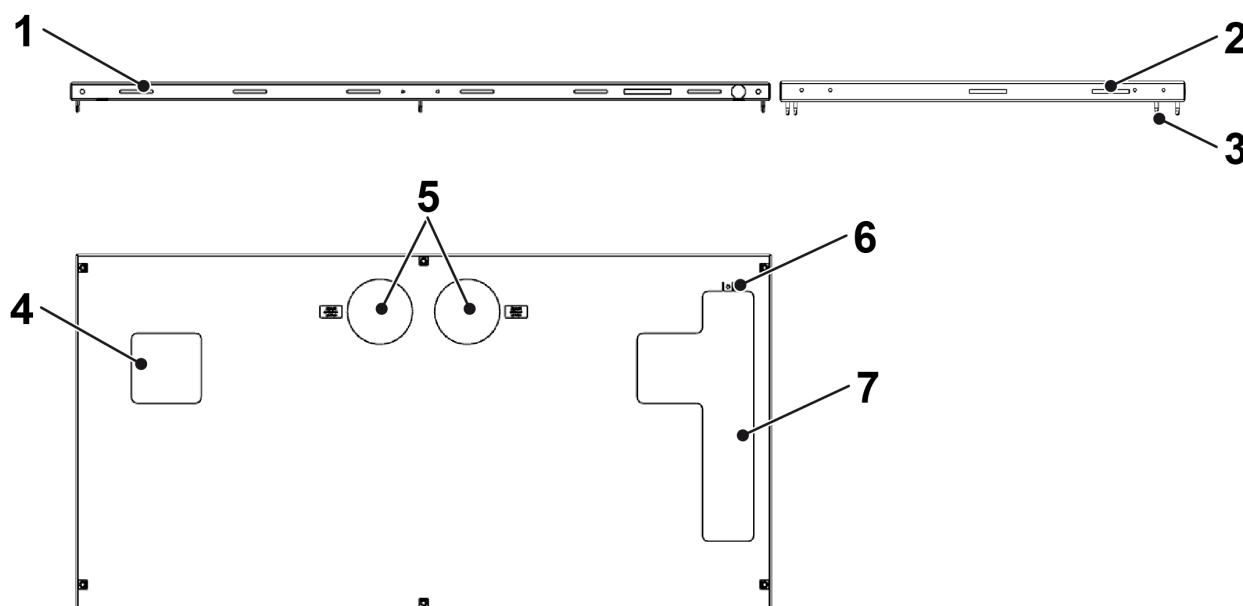


Fig. 2: Image of the extra load adapter (model size XL)

- |  |   |
|--|---|
| 1 Ventilation grille front                                 | 4 Cut-out for pipe penetrations           |
| 2 Ventilation grille side                                  | 5 Cut-outs for air supply and exhaust air |
| 3 Drill holes for connection to the safety storage cabinet | 6 Connector for equipotential bonding     |
|  | 7 Cut-out for thermocouple                |

Tab. 3: Technical specifications for model sizes

Model size	External dimensions [mm]	Empty weight (kg)	Max. load-bearing capacity [kg]	Non-flammable maximum load bearing component [kg]
S, M	593.5 x 609 x 30	4.55	50	25
SL, ML	593.5 x 744 x 30	5.61	50	25
L	893.5 x 609 x 30	6.79	100	48
LL	893.5 x 744 x 30	8.34	100	48
XS, XL	1193.5 x 609 x 30	9.23	100	48
XXL	1650 x 744 x 30	15.65	100	48

### 3.2 PREMIUM

The PREMIUM line load adapter has cut-outs for the exhaust air and air supply openings, the thermocouples and for any pipe penetrations.

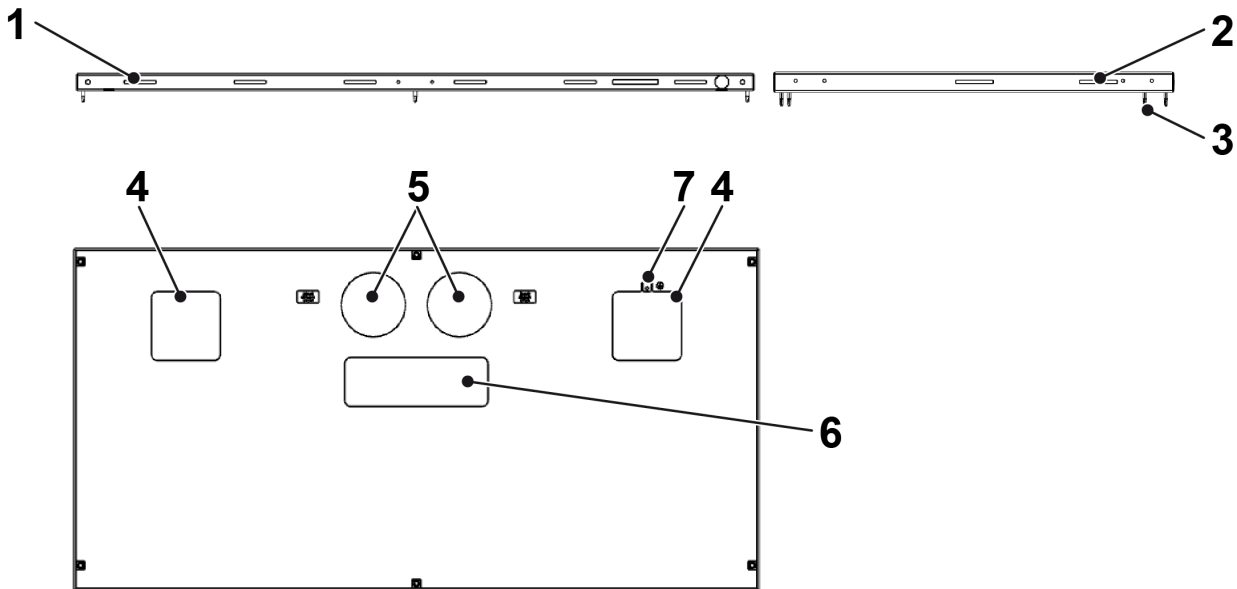


Fig. 3: Image of extra load adapter

- |  |   |
|--|---|
| 1 Ventilation grille front                                 | 4 Cut-outs for pipe penetrations          |
| 2 Ventilation grille side                                  | 5 Cut-outs for air supply and exhaust air |
| 3 Drill holes for connection to the safety storage cabinet | 6 Cut-out for thermocouples               |
|  | 7 Connector for equipotential bonding     |

Tab. 4: Technical specifications for model sizes

Model size	External dimensions [mm]	Empty weight (kg)	Max. load-bearing capacity [kg]	Non-flammable maximum load bearing component [kg]
M	594 x 595 x 30	4.49	50	25
ML	594 x 745 x 30	5.67	50	25
XL	1194 x 595 x 30	9.2	100	48

## 4 Structure and function

### 4.1 Construction

- Powder-coated sheet steel
- Stainless steel (in different qualities)
- Connection to the safety storage cabinet via drilling screws

### 4.2 Pipe penetration

If there is a pipe penetration fitted on the safety storage cabinet close to the extra load adapter, it can only be positioned within the designated free cut for the extra load adapter. Modification of the extra load adapter is not permissible.

#### ! NOTICE!

##### Later attachment of pipe penetrations

Incorrect attachment in the wrong location can cause damage to the safety storage cabinet.

- They should only be attached on the approved surfaces (see additional instructions for pipe penetrations).
- Holes only based on defined penetration profiles (see separate mounting instructions for each cabinet type).

#### ! NOTICE!

##### Routing and using pipe penetrations

The routing and use of pipes, cables and hoses are the responsibility of the operator.

Incorrect handling can damage the safety technology in the safety storage cabinet and cause it to fail.

- Carry out a separate risk assessment of the overall setup.

### 4.3 Earthing options

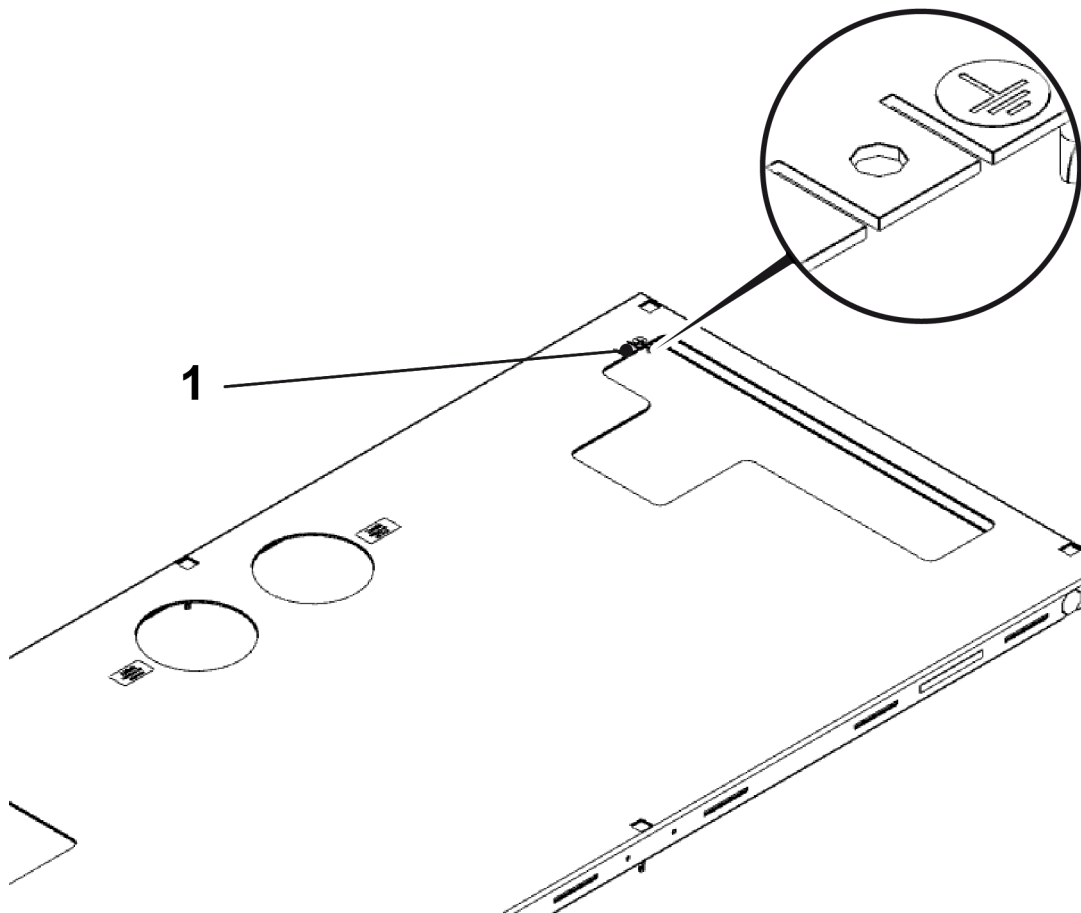


Fig. 4: Earthing options

1 Equipotential bonding saddle on the extra load adapter

The extra load adapter is conductively connected to the cabinet carcass via the drilling screws provided. This allows earthing in accordance with national regulations, such as TRGS 727 in Germany.

**! NOTICE!**

Model size XXL

The two-part extra load adapter for model size XXL has two equipotential bonding saddles.

## 5 Transport

### 5.1 Transport measures

The extra load adapter is packaged separately from the safety storage cabinet and protected for transport.

The packaging protects the extra load adapter from damage during transport and must only be removed when the safety storage cabinet is in position at the installation location.

### 5.2 Measures for in-house transport

If the safety storage cabinet with extra load adapter is transported in-house, all loads must be removed from the extra load adapter.

Please also note the safety information detailed in [↗ Chapter 5.1 'Transport measures' on page 45](#).





## 6 Extra load adapter installation

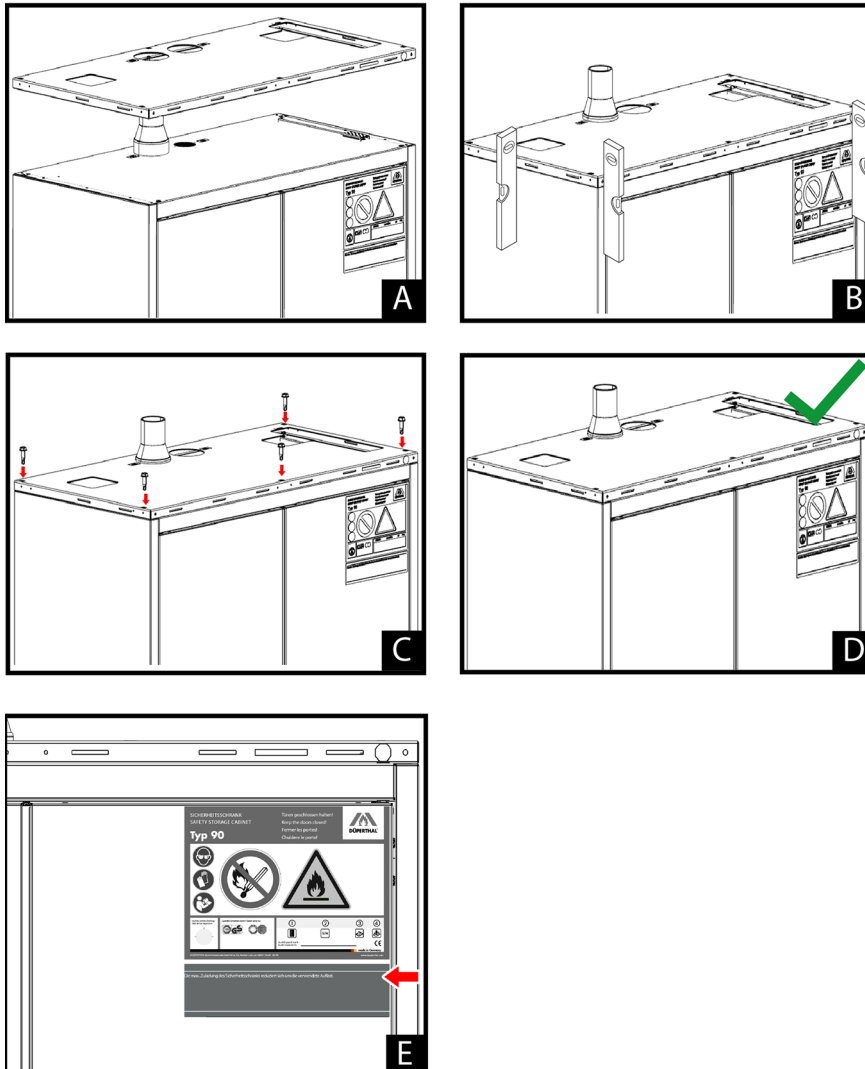


Fig. 5: Installing the extra load adapter

### Installing the extra load adapter

#### Personal:

- Technical specialist employees

1. ➤ Transport the extra load adapter to its place of use.
2. ➤ Remove packaging.
3. ➤ Position the extra load adapter on the cabinet roof and align it (A-B).
4. ➤ Connect the extra load adapter to the cabinet with the supplied drilling screws (C-D).
5. ➤ Attach the information for the extra load adapter below the type plate (E).



## 7 Commissioning

### 7.1 Superstructure on the extra load adapter

**! NOTICE!**

Cut-outs for the exhaust air and supply air opening must be kept open and remain freely accessible for maintenance and service purposes.

Cut-outs for the thermocouple must be freely accessible for maintenance and service purposes.

Cut-outs for pipe penetrations must be kept open if needed.

Extra loads are to be attached using tapping screws with a max. size of 4.8mm x 25mm.

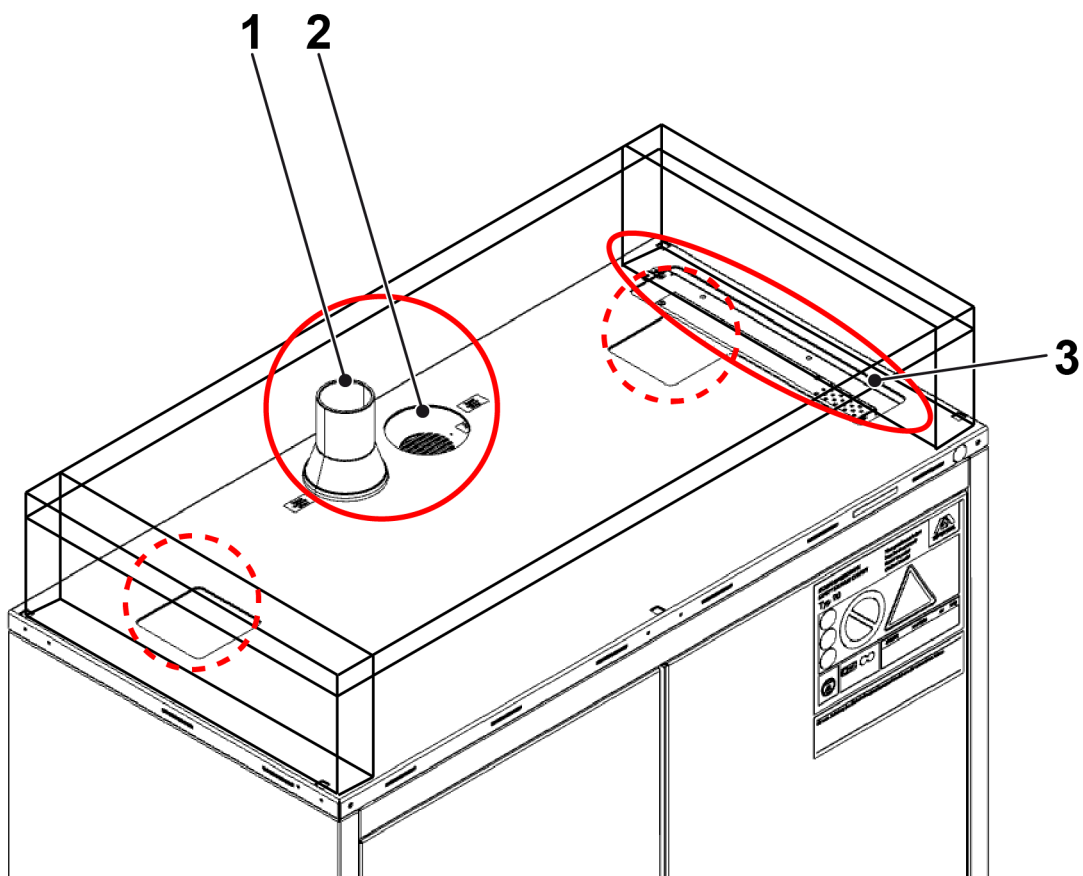


Fig. 6: Extra loads on cabinet

- 1 Exhaust air connection socket
- 2 Air supply opening
- 3 Thermocouple

## 7.2 Earth the safety storage cabinet via the extra load adapter

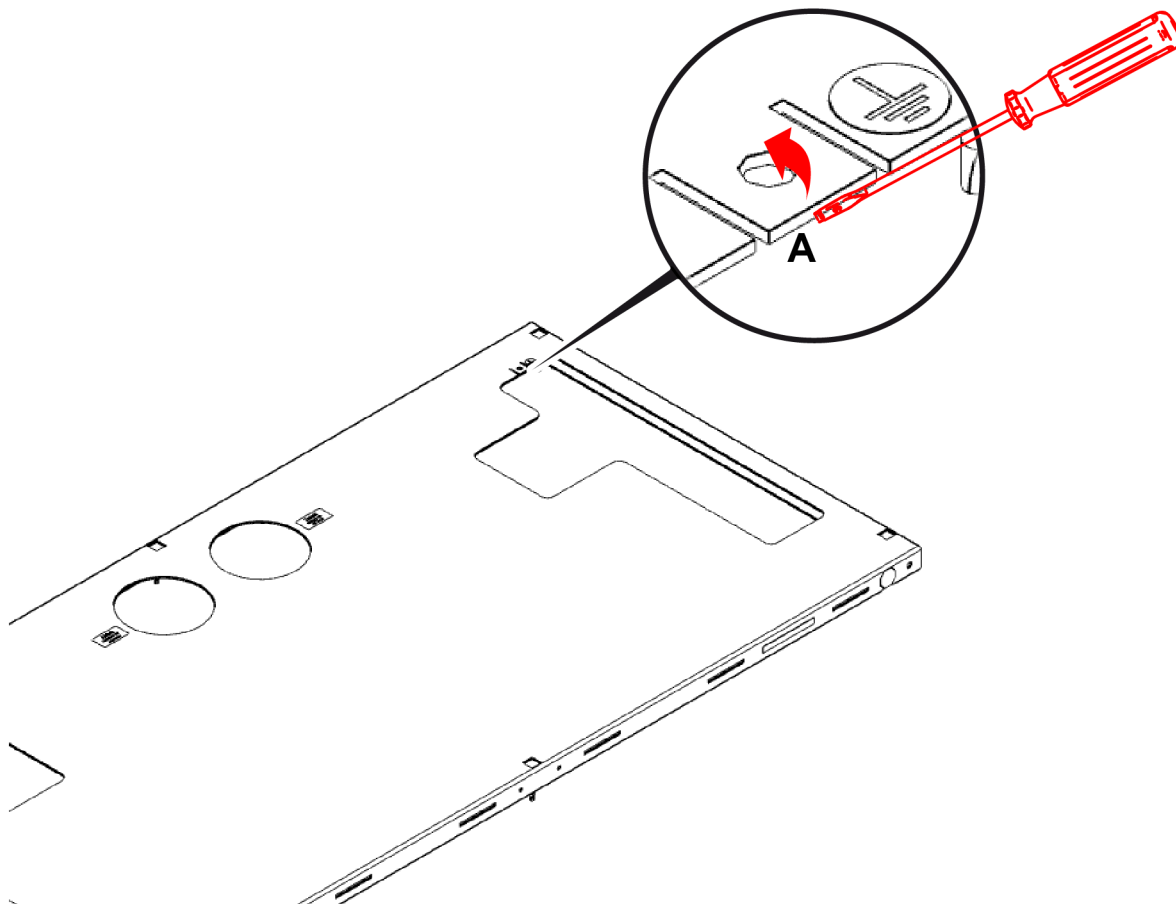


Fig. 7: Earthing connection

### Earthing connection

#### Personal:

- Technical specialist employees

1. Place the screwdriver under the equipotential bonding saddle (A).
2. Bend up the equipotential bonding saddle.
3. Remove powder coating in and around the drill hole.
4. If using rivets or screws, insert a serrated washer.

## 8 Maintenance

Check the extra load adapter for any externally visible damage or defects.

Always perform checks:

- After mounting
- Before commissioning.
- After changes.
- After maintenance.

The safety storage cabinet should also be inspected periodically at the following intervals.

## 8.1 Inspect monthly

Interval	Maintenance work	Personnel
Monthly	check side ventilation grille <ul style="list-style-type: none"> <li>■ for contamination.</li> <li>■ Clean dirty grille immediately.</li> </ul>	Laboratory and warehouse employees

## 8.2 Inspect annually

Interval	Maintenance work	Personnel
Annually	safety storage cabinet <ul style="list-style-type: none"> <li>■ Check the whole of the safety storage cabinet including the extra load adapter.</li> </ul>	DÜPERTHAL service technicians



*If faults should occur, assist the technical customer service by providing the cabinet model along with a description of the fault.*

## 9 Disposal

The extra load adapter can be completely dismantled.

Recycle the individual fractions, e.g. metal.

Comply with national and local disposal regulations.

To save resources, do not dispose of the extra load adapter with bulky or domestic waste.